



### Features

- 34kg load capacity
- Six-way dimensional adjustment clip device
- Elongated holes for depth adjustment
- Motion synchronization stabilizer

### Description

- Concealed drawer runners with push-open mechanism
- Offered in lengths from 250mm (10") to 600mm (24")
- Designed for material thicknesses ranging from 16mm to 19mm
- Facilitates effortless opening of the drawer through a gentle touch on the front
- Recommended for drawer widths spanning from 610mm (24") to 1220mm (48")
- Durable runners ensure consistently smooth and controlled drawer glide

### Applications

#### Standard Applications



#### Inset Drawer



PAGE 42

#### Slim Box



PAGE 52-57

#### Inner Drawer

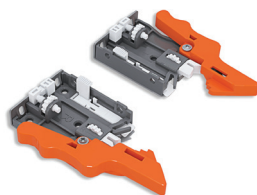


PAGE 58-63

### Cabinet and runner comparison

Overall cabinet depth	Drawer length	Runner SKU number
300mm	240mm	TCH-23303.S 19.250.3D
350mm	290mm	TCH-23303.S 19.300.3D
400mm	340mm	TCH-23303.S 19.350.3D
450mm	390mm	TCH-23303.S 19.400.3D
500mm	440mm	TCH-23303.S 19.450.3D
550mm	490mm	TCH-23303.S 19.500.3D
600mm	540mm	TCH-23303.S 19.550.3D
650mm	590mm	TCH-23303.S 19.600.3D

### Clip device



TCH-23000 CL.3D

### Runner set



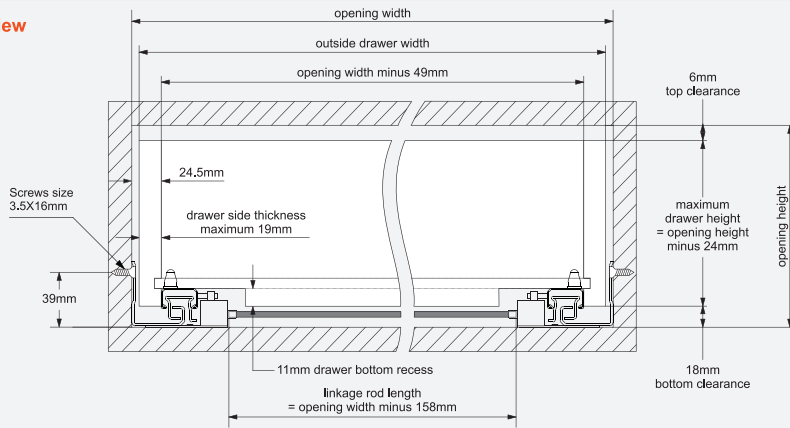
TCH-23303.S - 19MM

## Drawer and Cabinet Specifications



### Drawer box specifications

#### Front view



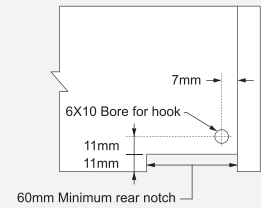
**Note:** The inside drawer width must equal Cabinet opening width minus 49mm to align and function optimally

### Calculating outside drawer width

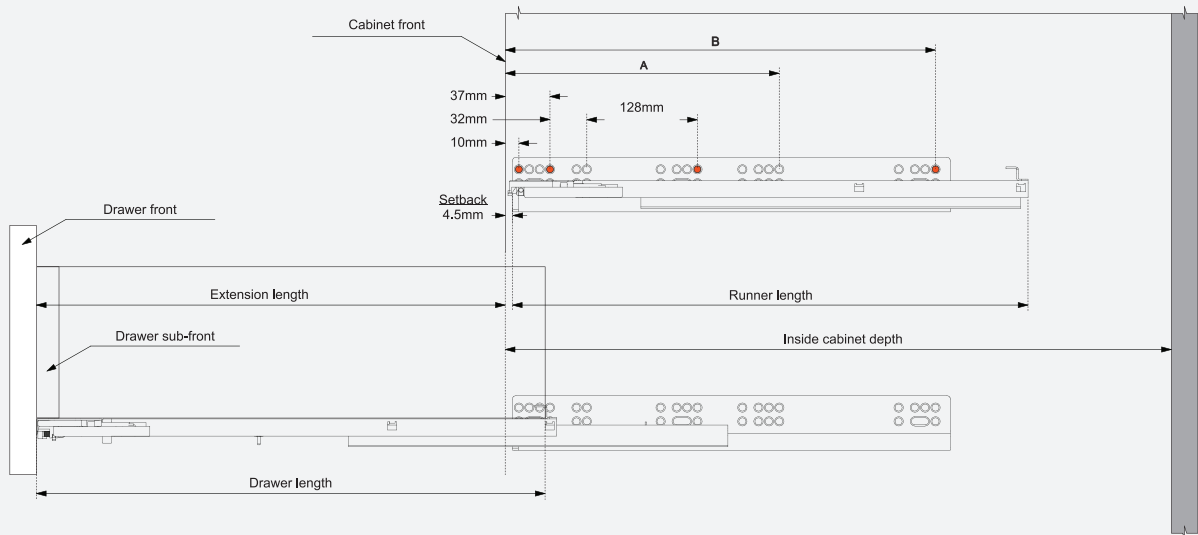
For drawer side panel thickness	19mm	18mm	17mm	16mm
Deduct from inside cabinet width	11mm	13mm	15mm	17mm
Example: For 500mm inside cabinet width and a 19mm thick drawer panel, 500mm minus 11mm = 489mm drawer width.				

### Drawer back preparation

#### Rear view



### Runner mounting specifications



**Note:** The orange dots show the locations where fixing screws should be installed to achieve the specified load ratings

Runner SKU number	Nominal length	Runner length	Drawer length	Extension length	Screw locations for frameless cabinet		Inside cabinet depth Minimum
					A	B	
TCH-23303.S 19.250.3D	250mm (10")	250mm	240mm	201mm	-	229mm	260mm
TCH-23303.S 19.300.3D	300mm (12")	300mm	290mm	254mm	-	229mm	310mm
TCH-23303.S 19.350.3D	350mm (14")	350mm	340mm	306mm	-	229mm	360mm
TCH-23303.S 19.400.3D	400mm (16")	400mm	390mm	356mm	-	261mm	410mm
TCH-23303.S 19.450.3D	450mm (18")	450mm	440mm	406mm	-	261mm	460mm
TCH-23303.S 19.500.3D	500mm (20")	500mm	490mm	456mm	261mm	325mm	510mm
TCH-23303.S 19.550.3D	550mm (22")	550mm	540mm	506mm	261mm	325mm	560mm
TCH-23303.S 19.600.3D	600mm (24")	600mm	590mm	556mm	261mm	357mm	610mm