



Features

- 34kg load capacity
- Six-way dimensional adjustment clip device
- Elongated holes for depth adjustment
- Motion synchronization stabilizer

Description

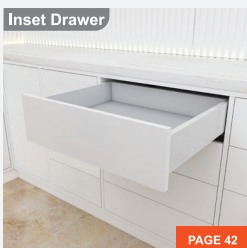
- Concealed drawer runners with push-open mechanism
- Offered in lengths from 250mm (10") to 600mm (24")
- Designed for material thicknesses ranging from 13mm to 16mm
- Facilitates effortless opening of the drawer through a gentle touch on the front
- Recommended for drawer widths spanning from 610mm (24") to 1220mm (48")
- Durable runners ensure consistently smooth and controlled drawer glide

Applications

Standard Applications



Inset Drawer



PAGE 42

Slim Box



PAGE 52-57

Inner Drawer

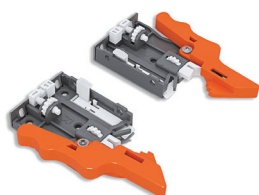


PAGE 58-63

Cabinet and runner comparison

Overall cabinet depth	Drawer length	Runner SKU number
300mm	240mm	TCH-23303.S 16.250.3D
350mm	290mm	TCH-23303.S 16.300.3D
400mm	340mm	TCH-23303.S 16.350.3D
450mm	390mm	TCH-23303.S 16.400.3D
500mm	440mm	TCH-23303.S 16.450.3D
550mm	490mm	TCH-23303.S 16.500.3D
600mm	540mm	TCH-23303.S 16.550.3D
650mm	590mm	TCH-23303.S 16.600.3D

Clip device



TCH-23000 CL.3D

Runner set



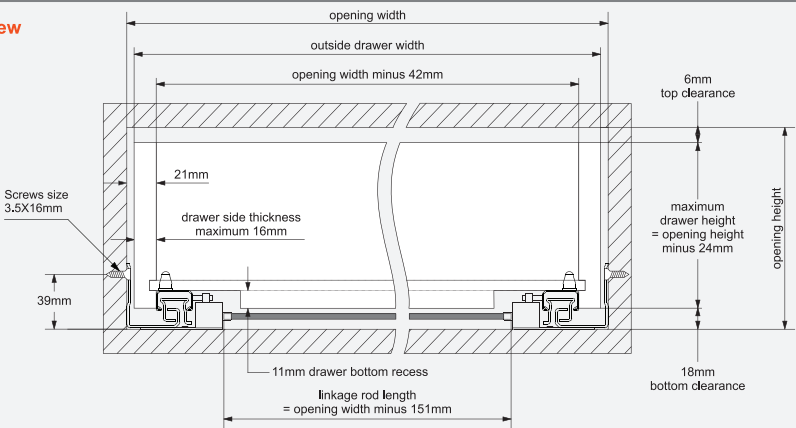
TCH-23303.S - 16MM

Drawer and Cabinet Specifications



Drawer box specifications

Front view



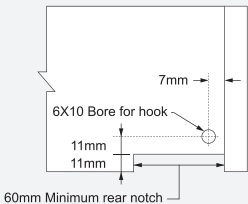
Note: The inside drawer width must equal Cabinet opening width minus 42mm to align and function optimally

Calculating outside drawer width

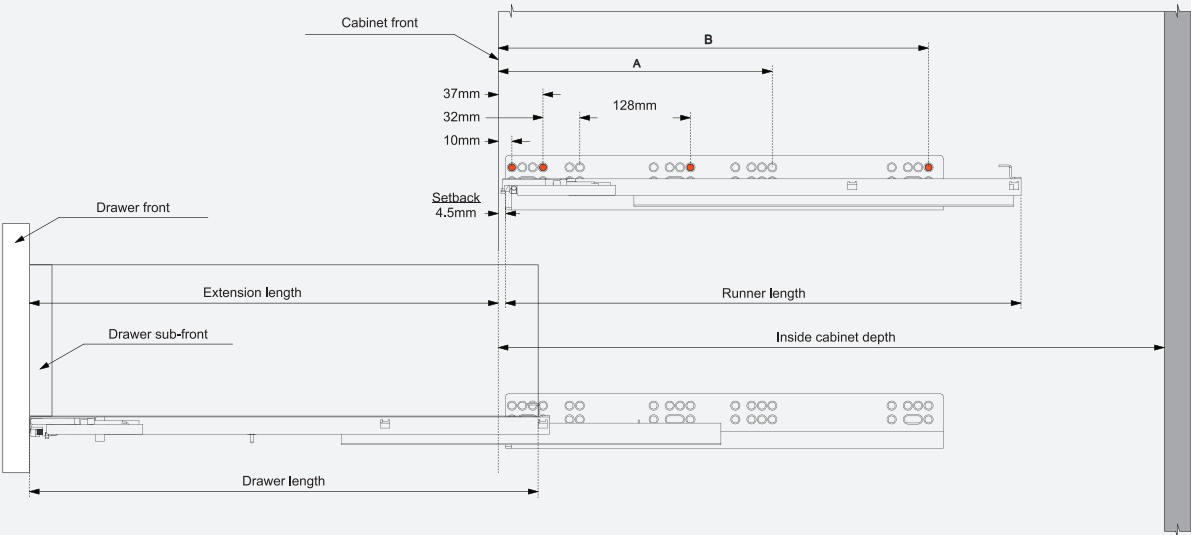
For drawer side panel thickness	16mm	15mm	14mm	13mm
Deduct from inside cabinet width	10mm	12mm	14mm	16mm
Example: For 500mm inside cabinet width and a 16mm thick drawer panel, 500mm minus 10mm = 490mm drawer width.				

Drawer back preparation

Rear view



Runner mounting specifications



Note: The orange dots show the locations where fixing screws should be installed to achieve the specified load ratings

Runner SKU number	Nominal length	Runner length	Drawer length	Extension length	Screw locations for frameless cabinet		Inside cabinet depth Minimum
					A	B	
TCH-23303.S 16.250.3D	250mm (10")	250mm	240mm	201mm	-	229mm	260mm
TCH-23303.S 16.300.3D	300mm (12")	300mm	290mm	254mm	-	229mm	310mm
TCH-23303.S 16.350.3D	350mm (14")	350mm	340mm	306mm	-	229mm	360mm
TCH-23303.S 16.400.3D	400mm (16")	400mm	390mm	356mm	-	261mm	410mm
TCH-23303.S 16.450.3D	450mm (18")	450mm	440mm	406mm	-	261mm	460mm
TCH-23303.S 16.500.3D	500mm (20")	500mm	490mm	456mm	261mm	325mm	510mm
TCH-23303.S 16.550.3D	550mm (22")	550mm	540mm	506mm	261mm	325mm	560mm
TCH-23303.S 16.600.3D	600mm (24")	600mm	590mm	556mm	261mm	357mm	610mm