



### Features

- 34kg load capacity
- Six-way dimensional adjustment clip device
- Elongated holes for depth adjustment

### Description

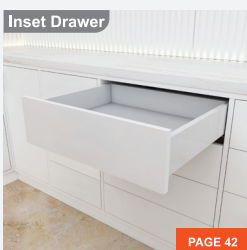
- Concealed drawer runners with push-open functionality
- Lengths available from 250mm (10") to 600mm (24")
- Compatible with material thicknesses ranging from 16mm to 19mm
- Enables effortless opening of the drawer via the push latch mechanism with a gentle touch on the drawer front
- Streamlined concealed design facilitates effortless installation
- Durable runners ensure consistently smooth and controlled drawer glide

### Applications

#### Standard Applications



#### Inset Drawer



PAGE 42

#### Slim Box



PAGE 52-57

#### Inner Drawer

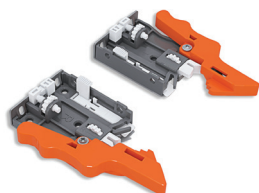


PAGE 58-63

### Cabinet and runner comparison

Overall cabinet depth	Drawer length	Runner SKU number
300mm	240mm	TCH-23303 19.250.3D
350mm	290mm	TCH-23303 19.300.3D
400mm	340mm	TCH-23303 19.350.3D
450mm	390mm	TCH-23303 19.400.3D
500mm	440mm	TCH-23303 19.450.3D
550mm	490mm	TCH-23303 19.500.3D
600mm	540mm	TCH-23303 19.550.3D
650mm	590mm	TCH-23303 19.600.3D

### Clip device



TCH-23000 CL.3D

### Runner set



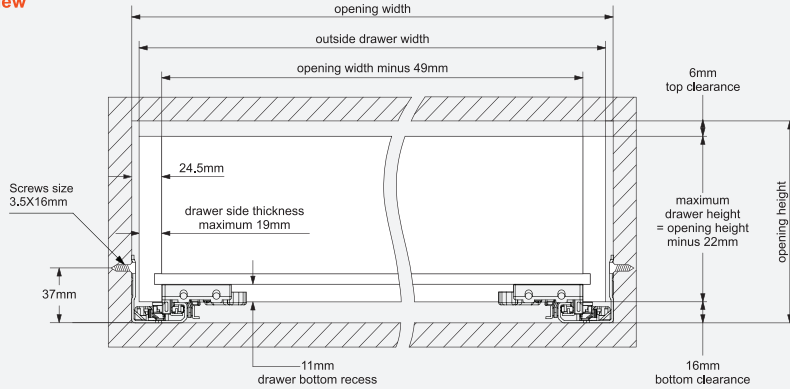
TCH-23303 - 19MM

# Drawer and Cabinet Specifications



## Drawer box specifications

### Front view



**Note:** The inside drawer width must equal Cabinet opening width minus 49mm to align and function optimally

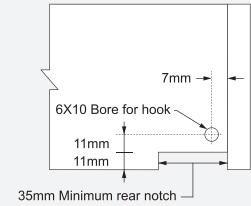
### Calculating outside drawer width

For drawer side panel thickness	19mm	18mm	17mm	16mm
Deduct from inside cabinet width	11mm	13mm	15mm	17mm

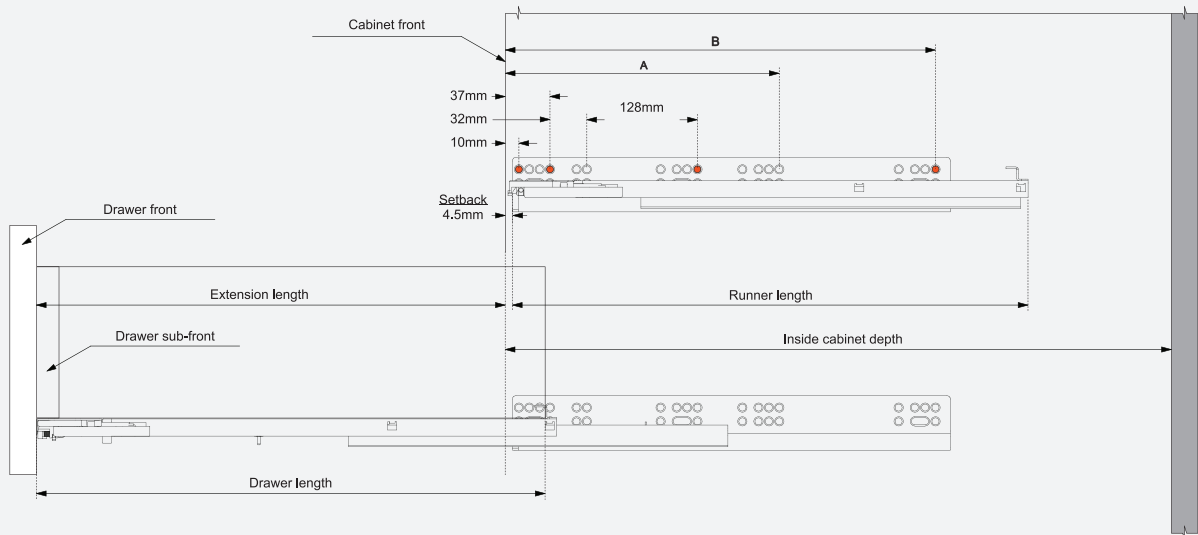
Example: For 500mm inside cabinet width and a 19mm thick drawer panel,  
500mm minus 11mm = 489mm drawer width.

## Drawer back preparation

### Rear view



## Runner mounting specifications



**Note:** The orange dots show the locations where fixing screws should be installed to achieve the specified load ratings

Runner SKU number	Nominal length	Runner length	Drawer length	Extension length	Screw locations for frameless cabinet		Inside cabinet depth Minimum
					A	B	
TCH-23303 19.250.3D	250mm (10")	250mm	240mm	201mm	-	229mm	260mm
TCH-23303 19.300.3D	300mm (12")	300mm	290mm	254mm	-	229mm	310mm
TCH-23303 19.350.3D	350mm (14")	350mm	340mm	306mm	-	229mm	360mm
TCH-23303 19.400.3D	400mm (16")	400mm	390mm	356mm	-	261mm	410mm
TCH-23303 19.450.3D	450mm (18")	450mm	440mm	406mm	-	261mm	460mm
TCH-23303 19.500.3D	500mm (20")	500mm	490mm	456mm	261mm	325mm	510mm
TCH-23303 19.550.3D	550mm (22")	550mm	540mm	506mm	261mm	325mm	560mm
TCH-23303 19.600.3D	600mm (24")	600mm	590mm	556mm	261mm	357mm	610mm